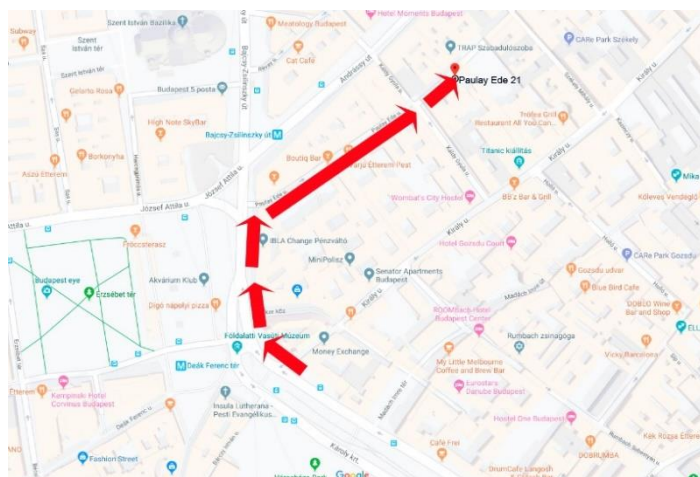
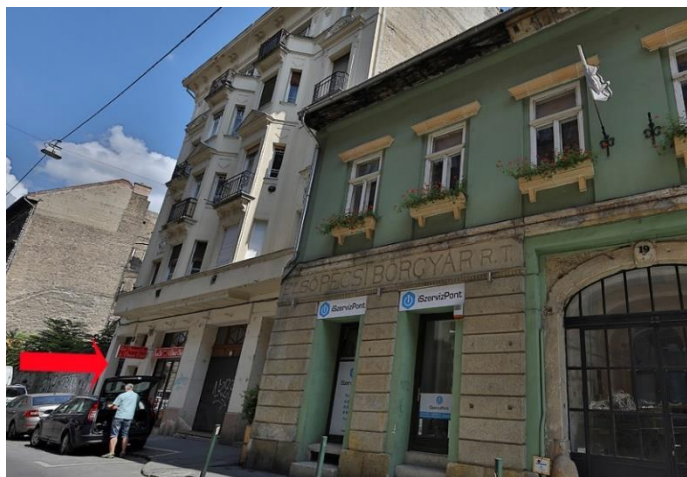


# How to get from the Airport to Paulay Premium Suite Opera

- **address** H-1061 Budapest, Distr. VI, Paulay Ede utca 21., 2nd floor 1.,door bell:20
- **public transportation** approx 1 hour costs: 900 HUF (3 EUR/person)  
From the Airport Terminal by Airport-Center direct bus No.100 E to DEÁK FERENC TÉR, then walk 400 meters to the apartment



- **taxi** approx 40-45 min. costs: 1-4 pers. around 32 EUR
- **private transfer from the airport** approx 40-45 min. costs: 1-5 persons 35 EUR  
paid only in cash (in EUR, USD, GBP or HUF)

**Transfer can be ordered latest 48 hrs. before arrival with your arrival details (time, flight no.)**

- **private transfer to the airport** approx 40-45 min. costs: 1-5 persons 30 EUR  
paid only in cash (in EUR, USD, GBP or HUF)

- **check-in** from 3.00 pm

## Early check-in before 12.00 am €10.00 in cash

In case of early arrival you can leave your luggages in the apartment from 11.30 am (after leaving of previous guests) for free and you can take your first walk around until cleaning will be ready for you. It will be charged only if the flat is cleaned and ready to stay.

## Late check-in fee after 10.00 pm €10.00 in cash

- **check- out** till 11.00 am

In case of late departure from the airport you can leave your suitcases in the apartment from 11 am regulary till 2 pm or next guest's arrival. If we have no guest arrival on the same day you are able to leave bags for longer.

- **luggage storage** nearest: Paulay Ede utca 3. <https://urban-lobby.com/locations>